



Chapel Conscience Store
GoLocal
Serving our community well



One way



Apt 508 Fresh Building, 138 Chapel Street, Salford, M3 6DE

Cladding works have been completed EWS-1 form will be available imminently. Jordan Fishwick are pleased to have for sale this, Two bedroom apartment found on the fifth floor. The Fresh Development is located on Chapel Street in the bustling area of Salford. This Modern and attractively presented apartment ideal for investors and first time buyers and mortgage buyers are welcome. The apartment has entrance hallway with storage, the spacious kitchen and lounge provide space to rest and relax in. The kitchen comes with integrated appliances, oven/ hob, dishwasher and fridge/freezer along with laminate flooring. The bathroom has shower attachment over the bath and is fully tiled.

Asking Price £200,000

Viewing arrangements

Viewing strictly by appointment through the agent
245 Deansgate, Manchester, M3 4EN 0161 833 9499 opt 3

The Building

Situated in a prime location, this apartment benefits from easy access to local amenities, including shops, restaurants, and public transport links, making it a fantastic base for exploring the wider area. Whether you are commuting to work or enjoying a leisurely day out, you will find everything you need within reach. Salford Station is located 50 yards across the road and Spinningfields is only a stones throw away.

The Hallway

Laminate flooring with built in storage cupboard housing hot water system.

Kitchen / Lounge

12'5" x 21'1"

The lounge has laminate flooring, double glazed window and electric heating with spot lights. The Kitchen includes integrated appliances, Laminate Flooring, Electric heaters and spot lighting.

Bedroom One

10'5" x 8'6"

Fitted carpet. Wall mounted heater. Spotlights. Double Glazed Window.

Bedroom Two

19'4" x 12'9"

Spotlights. Fitted carpet. Wall mounted heater. Double Glazed Window.

Bathroom

6'7" x 7'9"

The bathroom is Fully Tiled with hand wash basin, WC and bath there is also a shower attachment over the bath. Fitted Mirror and chrome towel rail.

Additional Information

Service Charge - £2,376.88

Ground Rent - £250.00

Lease 999 Years from 2007

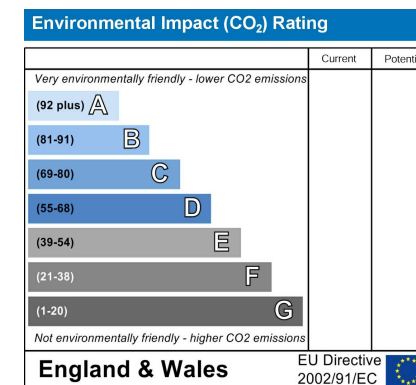
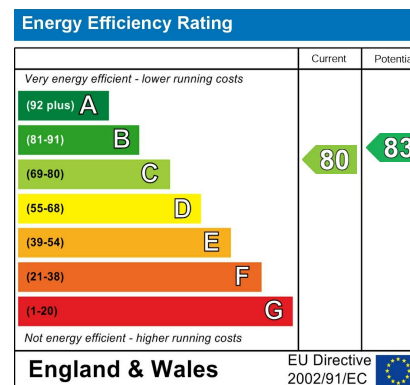
Council Tax - C

EPC- C

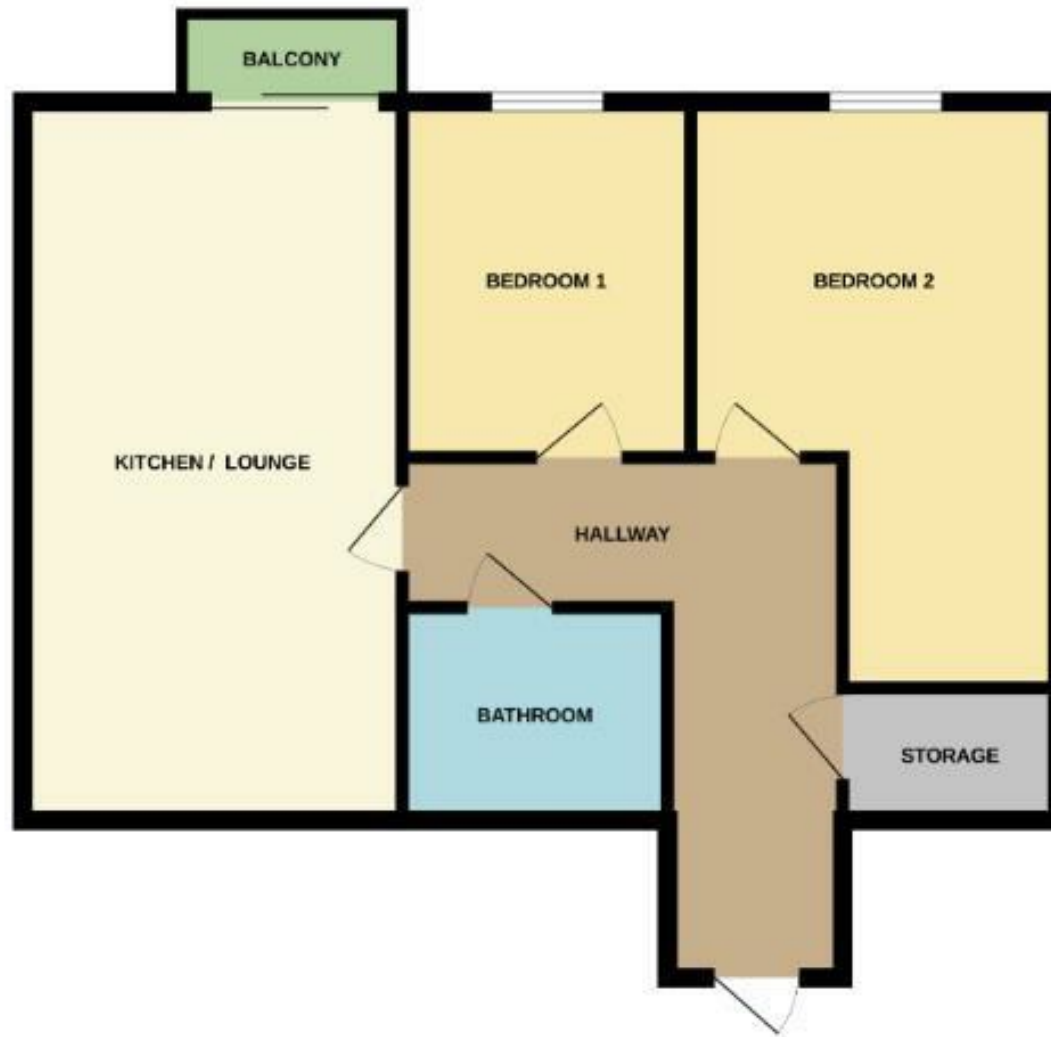
Agents Notes

To be able to purchase a property in the United Kingdom all agents have a legal requirement to conduct Identity checks on all customers involved in the transaction to fulfil their obligations under Anti Money Laundering regulations. We outsource this check to a third party and a charge will apply. Ask the branch for further details.

This property may come under a Non-qualifying leaseholders , these are owners who do not benefit from the leaseholder protections under the Building Safety Act 2022, meaning they can be held responsible for uncapped costs to fix unsafe cladding and fire safety defects in their buildings, as they own multiple properties. Please check with your lender prior to viewing.







These particulars are believed to be accurate but they are not guaranteed and do not form a contract. Neither Jordan Fishwick nor the vendor or lessor accept any responsibility in respect of these particulars, which are not intended to be statements or representations of fact and any intending purchaser or lessee must satisfy himself by inspection or otherwise as to the correctness of each of the statements contained in these particulars. Any floorplans on this brochure are for illustrative purposes only and are not necessarily to scale.

Offices at: Chorlton, Didsbury, Disley, Hale, Glossop, Macclesfield, Manchester Deansgate, Manchester Whitworth Street, New Mills, Sale, Wilmslow and Withington

245 Deansgate, Manchester, M3 4EN

0161 833 9499 opt 3

manchester@jordanfishwick.co.uk

www.jordanfishwick.co.uk

